

## How to obtain x-rays for pelvic measurements

The radiographs can be taken without the use of anaesthetics. The dog is placed first in lateral and thereafter in dorsal recumbency. In the laterolateral projection the legs are pulled caudally to expose the *pecten ossis pubis* and the focus of the central beam is positioned at the *trochanter major*. In dorsal recumbency, where radiographs in ventrodorsal projection are obtained, the dog is placed in frog-leg position and the central beam is focused on a midline between the two *trochanter major*.

To make sure that the dogs are lying in a straight position, a comparative evaluation of the size and shape of various pelvic structures on the radiographs of the pelvis in ventrodorsal projection was made. These structures are the right and left *foramen obturatorium*, the *ala ossis ilii* and the *tabula ossis ischii*. On the laterolateral projection it is made sure that the *caput femoris*, the *ala ossis ilii* and the *tuber isciadicum* are as superimposed as possible.

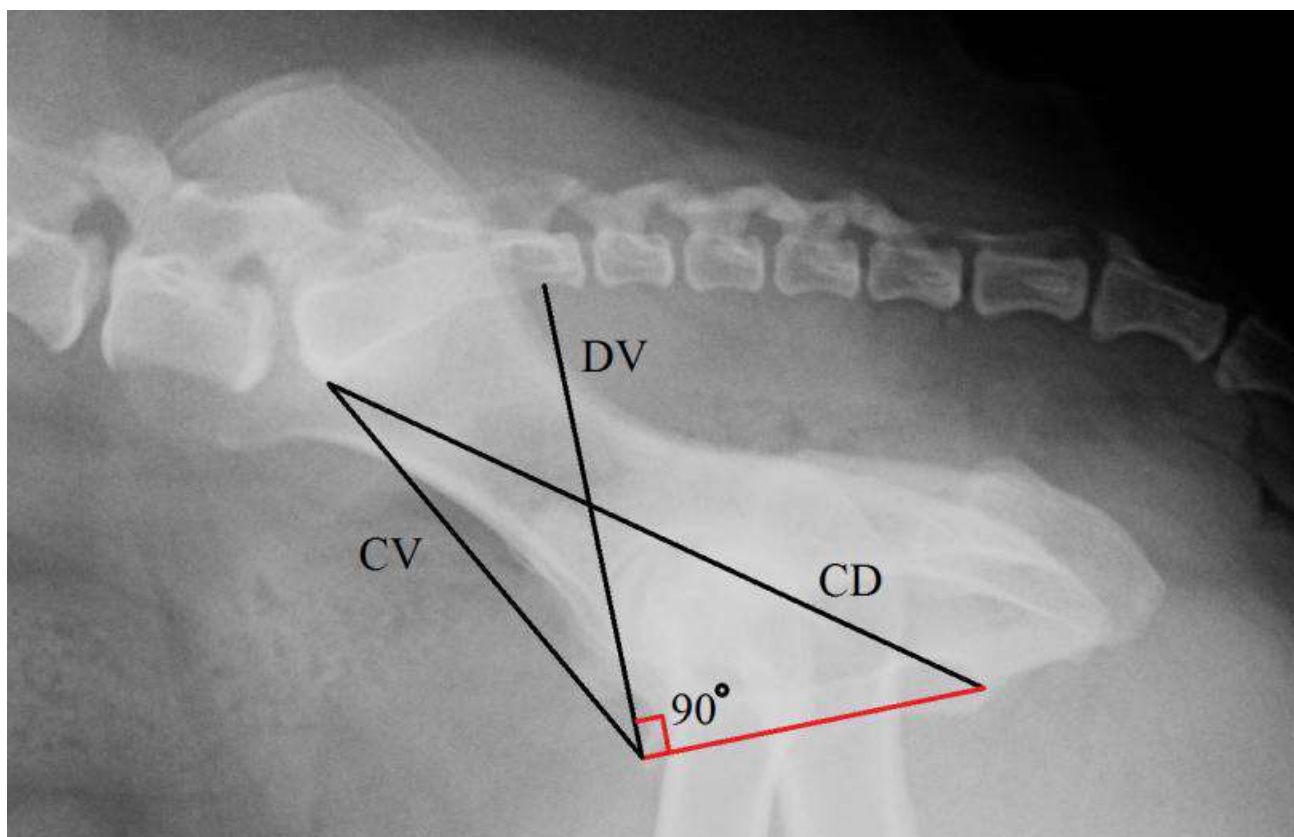


Figure 1: Here you see the measurements that are made on the laterolateral radiograph. Make sure that the structures in question are visible and that the pelvis is as superimposed as possible.

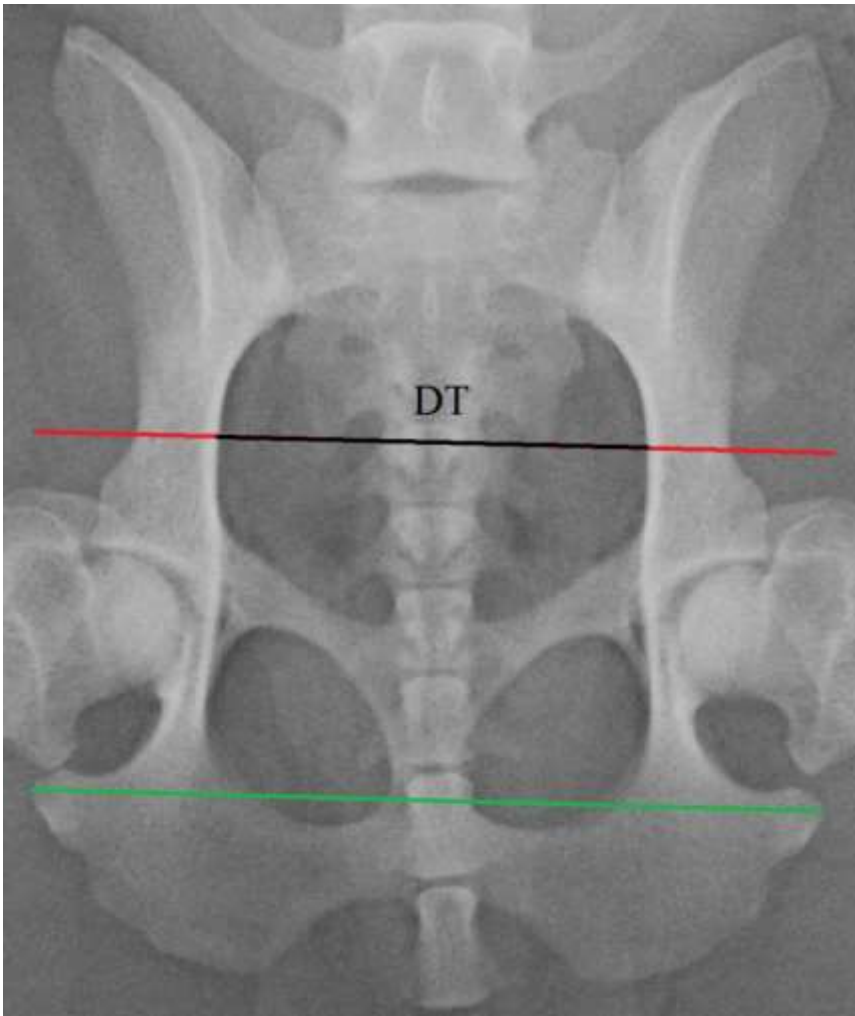
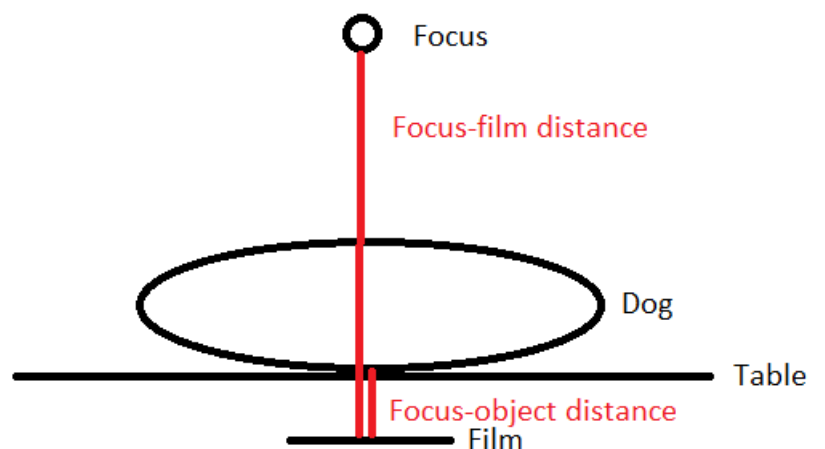


Figure 2: Measurements on the ventrodorsal radiograph. Check the size and shapes of the structures mentioned above in order to evaluate the quality of the picture.

In order to correct for the degree of magnification that will occur when taking a radiograph, you will need to measure the following:

- The thickness of the dog measured at the level of trochanter major in both lateral and in dorsal recumbency
- The distance between the object (dog) and the film
- The distance between the focus and the film



The pictures are sent to DVM Karen Singers as a DCM file to the following e-mail: [k-singers@hotmail.com](mailto:k-singers@hotmail.com). If there are any problems with sending the files or if you have any questions, do not hesitate to contact me on e-mail or phone: 0045-28935087.